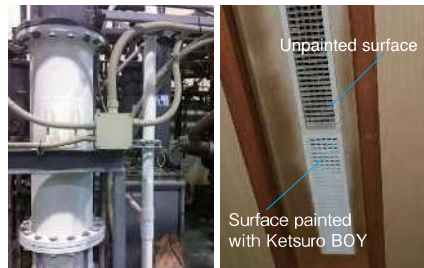


Dew Prevention Paint Ketsuro BOY



An example of setup for cooling equipment. It prevents corrosion of piping due to condensation.



An example of setup for cooling tower.

An example of setup for air conditioner outlet.

Mold and corrosion can be prevented with the ease of installation that only Dew Prevention Paint can provide.

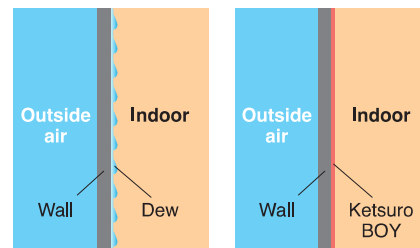
Ketsuro BOY consists of two layers, a heat insulating layer and a porous layer, which form an anti-condensation layer to prevent condensation that can cause mold and corrosion.

It adheres tightly to the source, rather than wrapping or covering it as is generally done to prevent condensation.

As a result, it is now relatively easy to install the product in places and parts that were traditionally considered difficult.

It is water-based paint, which makes it safe and easy to handle. Compared to existing anti-dew paint, the coating is thinner and stretches well.

It is applied in various places and fields, such as piping for cooling equipment, cooling towers, concrete walls in basements, air conditioner outlets, and in closets.



Unpainted surface

Surface painted with Ketsuro BOY

Heat Shielding Paint Mirror BOY



An example of a factory roof and wall.



An example of a worker's helmet.

An example of a tank wall.

Heat shielding paint excellent in workability and durability
Reflects solar heat for indoor comfort

An environment-friendly, energy-saving thermal control paint for roofs and exterior walls that reflects solar heat by painting roofs and exterior walls and prevents temperature rise inside buildings. One of its main features is that it is very easy to apply and does not get uneven, so anyone can easily work with it.

High Heat Control Performance

Reflects sunlight with a special pigment with high heat shielding properties, and insulates with a ceramic tube. These two characteristics help prevent heat and reduce temperature rise inside the building, which saves energy needed for A/C. Surprisingly, it has been applied to helmets at work sites, and has received good reviews.

Long-lasting durability and stain resistance

As the moisture dries, acrylic silicon resin creates a strong coating film. Conventional thermal barrier paints have been feared to lose performance due to stains or aging of the coating surface. However, Mirror BOY, which has high stain resistance and long-lasting performance, keeps high thermal barrier pigments in place to protect buildings and help maintain a beautiful appearance for a long time.

Mirror Boy Aerosol Spray "Sha-Sha," developed for outdoor A/C units, has received many great reviews on its energy-saving ability. It can be applied to work helmets to help prevent heatstroke.



Distributor

Manufacturing/development
OZONE SAVE

Contact us for
heat protection



[DANNETSU] Excellent

BOY
series
lineup

Thermal Insulation Paint
Super Yakedo BOY

Thermal Insulation Paint
Yakedo BOY

Dew Prevention Paint
Ketsuro BOY

Heat Shielding Paint
Mirror BOY

An Ozone Save Original
**Next-generation
insulation material
[DEX]**

We have products that handle 1100°C
Energy saving measures
Cost reduction

OS
OZONE SAVE



Thermal Insulation Paint
Super Yakedo BOY

Thermal Insulation Paint
Yakedo BOY

Thin-film **Insulation** Made Possible by Paint

- Underlayment for severe condensation
- Increased energy efficiency in refrigeration equipment and facilities
- Energy saving measures in combination with A/C equipment
- For hearth, wood stove, and other DIY
- Increased power just by applying to the exhaust pipe of a motorcycle

- Second-degree prevention
- Facilities and equipment requiring heat protection
- Buildings, houses, rooms requiring insulation
- Intricate areas where insulation cannot be used
- Reduce heat loss and improve thermal efficiency

We are helpful in various fields and areas.
Please consult us before giving up.

No limit when choosing where to install them.

Yakedo BOY is available in both water-based and organic solvent-based systems.

Choose the type of coating that best suits your needs. Conventional heat insulating paints are generally water-based, and it is often difficult to apply them to metal parts at industrial sites.

Yakedo BOY, an easy to work with organic solvent-based paint, can be used on metal parts, and is popular at sites troubled by heat problems.



Heat resistant up to 1100°C.

With a heat resistant temperature of 1100°C, the Super Yakedo BOY has excellent thermal insulation and high heat resistance, making it possible to approach areas where there was previously no hope for thermal insulation.

Super Yakedo BOY" with a heat resistance of 600°C and "Yakedo BOY" with a heat resistance of 150°C are available for your desired use in different applications.

Even though the applied substance shows an extremely hot temperature, the surface temperature is low, making it effective in preventing second-degree burns.

In addition, because of its durability in direct flame, the possible places and areas of application continue to expand.

We continue to work on a number of tests to solve our customers' everyday problems.

Please feel free to contact us for any thermal solution.

Thermal Insulation Paint
Super Yakedo BOY Heat Resistant Temperature **1100°C/600°C**

Thermal Insulation Paint
Yakedo BOY Heat Resistant Temperature **150°C**



At the request of our customers, we have conducted tests under a variety of environmental conditions, and are now working towards commercializing the product.

Very easy to install and easy to handle.

We often hear that insulating paint is hard to apply.

Most insulating paints that contain a lot of ceramic have high viscosity or are two-component paints, which are not easy to apply.

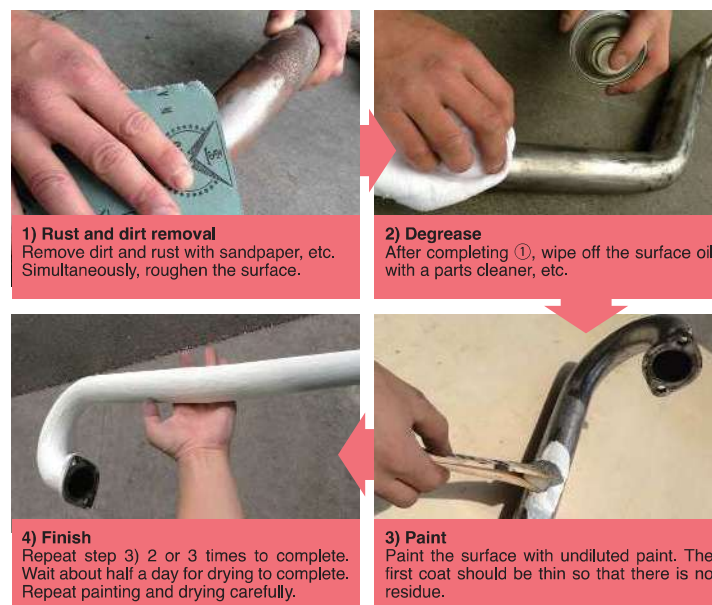
Therefore, they aren't applied properly, leaving you with little results after all the hard work.

Yakedo BOY and Super Yakedo BOY have reviewed the raw materials and improved on these problems.

Both water-based and organic solvent-based paints have low viscosity and are one-component paints that are easy to handle.

As with general paints, you can choose the application method and tools such as brushes, rollers, trowels, and guns, to suit the desired finish.

In addition, it can be easily diluted with water for water-based paints and with organic solvents for oil-based paints, making it a very easy-to-handle heat insulating paint.



High durability with strong coating

Ceramic tubes line up uniformly on the surface of the Yakedo BOY and Super Yakedo BOY coating to form a heat insulating layer.

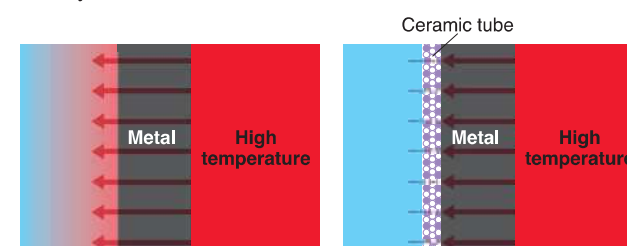
By blending several types of ceramic tubes of different particle sizes and materials, the heat insulation property is enhanced and the strength of the coating film is improved.

Although it depends on the surface type and location of the painted object (building, house, or equipment), it has been confirmed that the coating is durable for 10 years.

The strength of the coating film has attracted attention in the auto and racing industries, where it has been subjected to a variety of tests.



High-quality hollow ceramic tubes are used. The content is 60% in liquid form and 80% after drying.



Choose from a variety of colors.

Choose from the samples in the catalog.

If the color you desire is not available, we are able to adjust the tone as per request.

Please contact us for details. (Color mixing/tone adjustments are available from a minimum of 16 L cans. Transparent colors are not available because the ceramic is white.)